

## Technical data

Technical data	operation when directly connected to chimney	operation when connected accumulation mass	
	◀ A	◀ A	◀ A
Energy label	◀ A	◀ A	◀ A
<b>Operating data</b>			
Nominal heat power	10,5 kW	----	----
Efficiency	> 80 %	----	----
Consumption of wood	3,1 kg/h	4,5 kg	3,2 kg
Total heat output of the burning chamber	----	18 kW	13 kW
Average heat output / heat accumulation time <sup>5</sup>	----	1,8 kW / 8 h	1,3 kW / 8 h
Mass flow of flue gas	8,8 g/s	15 g/s	12 g/s
Required chimney pressure	12 Pa	12 Pa	15 Pa
Required amount of combustion air	30 m <sup>3</sup> /h	40 m <sup>3</sup> /h	30 m <sup>3</sup> /h
<b>Average flue gas temperature</b>			
on the output	315 °C	359 °C	324 °C
behind 2,4 m of ceramic accumulation system KMS 300 <sup>1</sup>	----	224 °C	----
behind S-accumulation rings (5x S-acc. ring Ø345mm)	----	----	231 °C
<b>Heat distribution</b>			
fireplace insert	49 %	35 %	35 %
door glass (single / double)	51 / 0 %	51 / 0 %	51 / 0 %
additional accumulation mass	----	14 %	14 %
<b>Information for ventilated builds</b>			
Minimal grill area supply / outgoing	700 / 850 cm <sup>2</sup>	700 / 850 cm <sup>2</sup>	700 / 850 cm <sup>2</sup>
Minimum distance from insulated areas / floor	50 / 0 mm	50 / 0 mm	
Reference insulation <sup>2</sup> ceiling / back wall / side wall / floor	120 / 80 / 0 / 0 mm	120 / 80 / 0 / 0 mm	
Calciumsilicate insulation <sup>3</sup> ceiling / back wall / side wall / floor	80 / 60 / 0 / 0 mm	80 / 60 / 0 / 0 mm	
<b>Information for non-ventilated builds (closed grills)</b>			
Minimum radiant area <sup>4</sup>	suitable	4 m <sup>2</sup>	
Minimum distance from insulated areas / floor	50 / 20 mm	50 / 20 mm	
Reference insulation <sup>2</sup> ceiling / back wall / side wall / floor	160 / 100 / 0 / 20 mm	160 / 100 / 0 / 20 mm	
Calciumsilicate insulation <sup>3</sup> ceiling / back wall / side wall / floor	120 / 75 / 0 / 20 mm	120 / 75 / 0 / 20 mm	
<b>General technical information</b>			
Total weight / lining weight	circa 277 / 69 kg	circa 277 / 69 kg	
Burning chamber dimensions (width x depth)	520 x 305 mm		
Combustion air connection	Ø 150 mm		
Use in non-ventilated accumulation builds according to craft rules	suitable		
Tested according to	EN 13229		
Meets values	1. BlmSchV (Stufe2), 15a BVG, NS 3059		

1 Listed value from testing. For accurate results is evaluation of each system in the Ortnr / KOV program necessary

2 Mineral wool according to AGI-Q 132

3 Example SkamoEnclosure Board 225 kg/m<sup>3</sup>

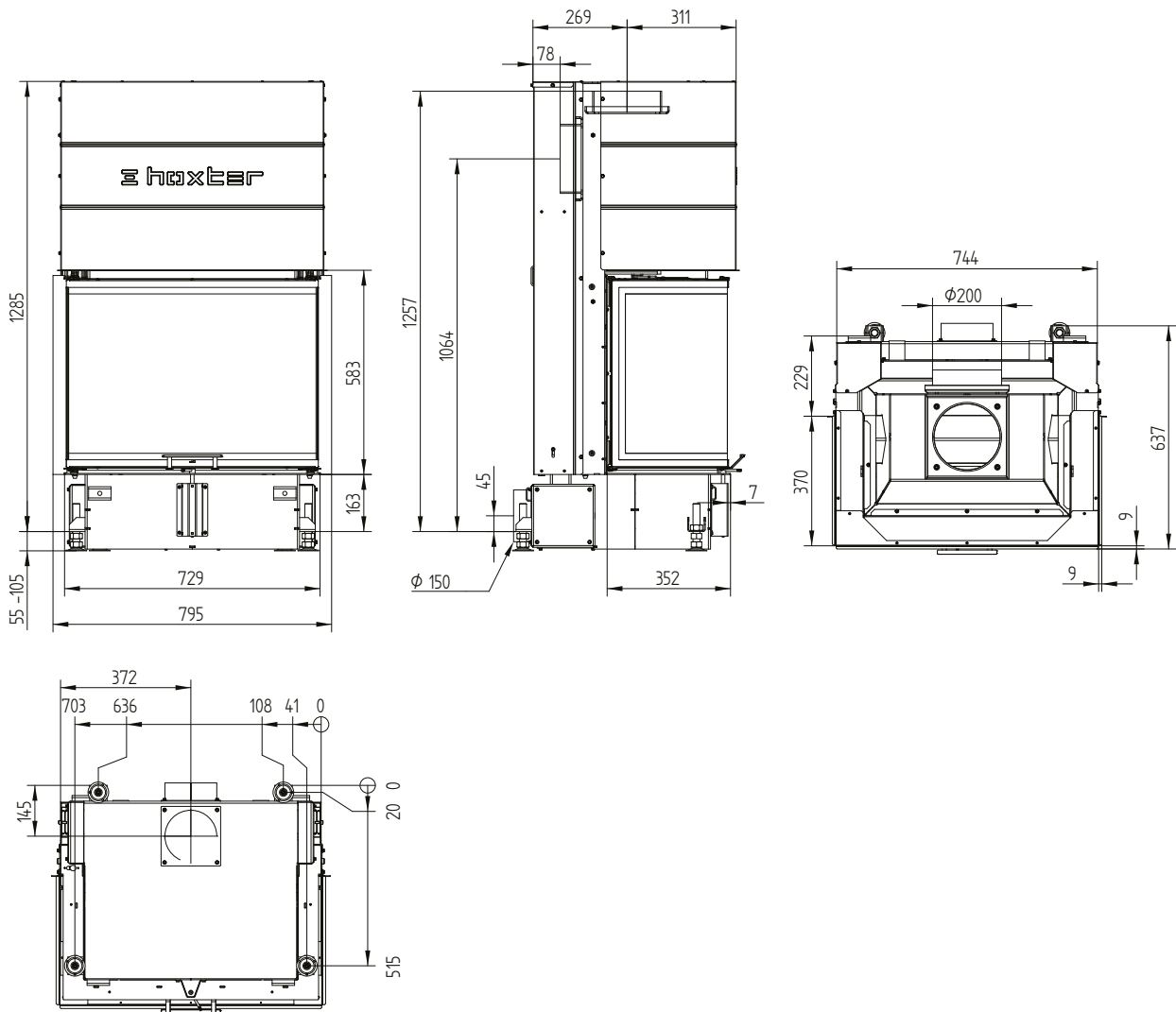
4 Depends on accumulation period and material characteristics. Listed values calculated with average specific heat output = approx. 500 W/m<sup>2</sup>

5 Storage operation, one wood charge for storage duration, with closed construction and efficiency > 80%

# UKA 37/75/37/57h

Technical data  
Version 09/2023

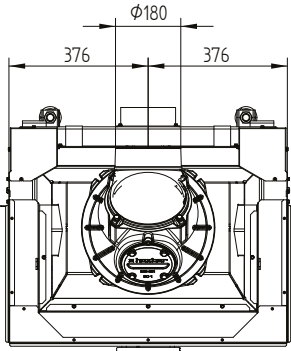
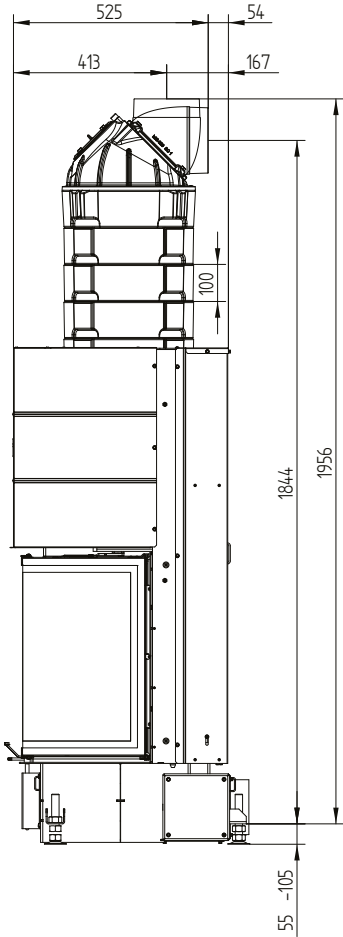
## UKA 37/75/37/57h / air inlet / feet



# UKA 37/75/37/57h

Technical data  
Version 09/2023

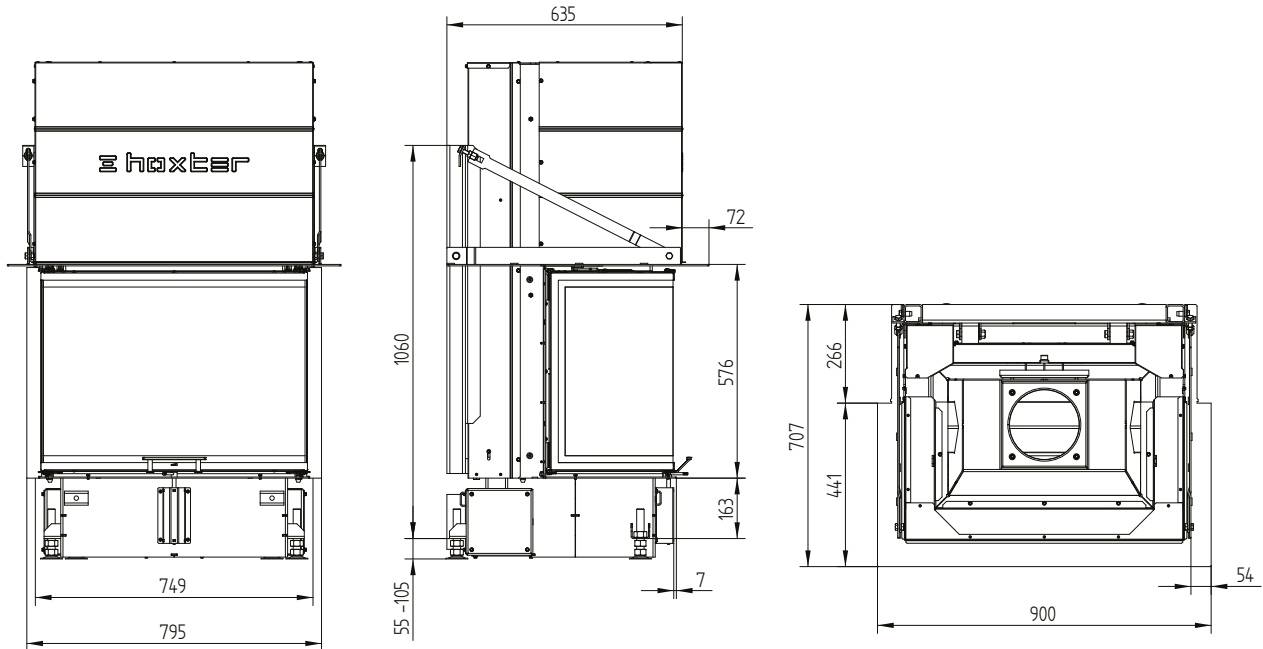
## UKA 37/75/37/57h S-accumulation set



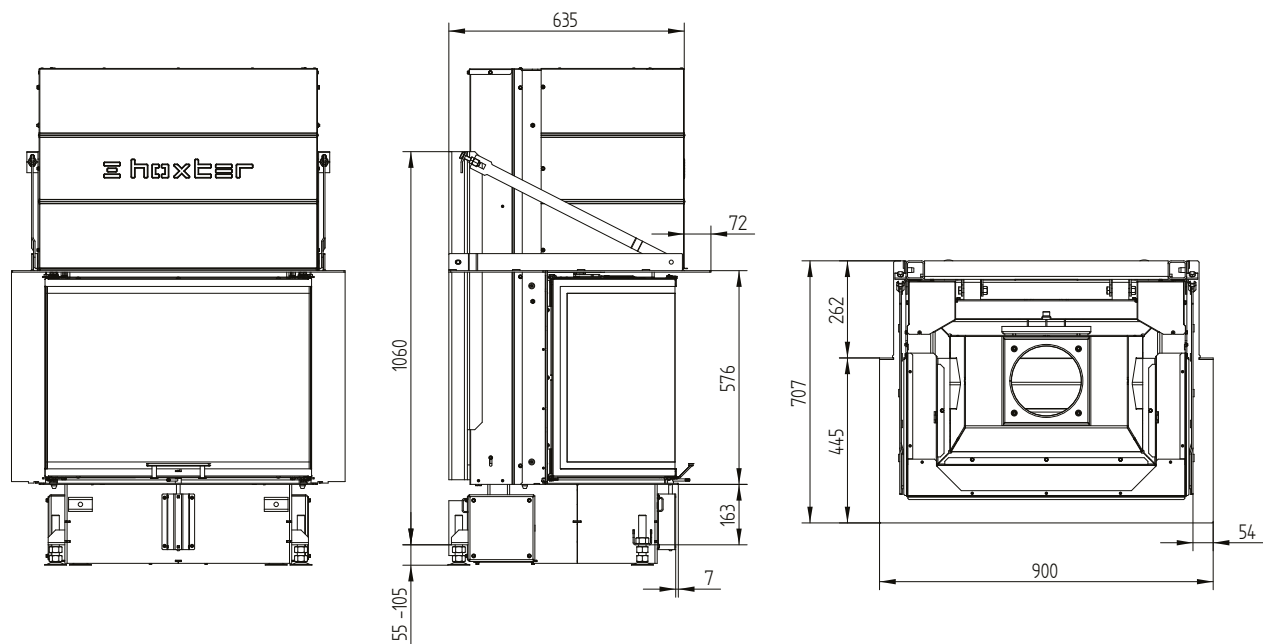
# UKA 37/75/37/57h

Technical data  
Version 09/2023

## UKA 37/75/37/57h supporting construction incl. build-on frame 3sides 70 mm



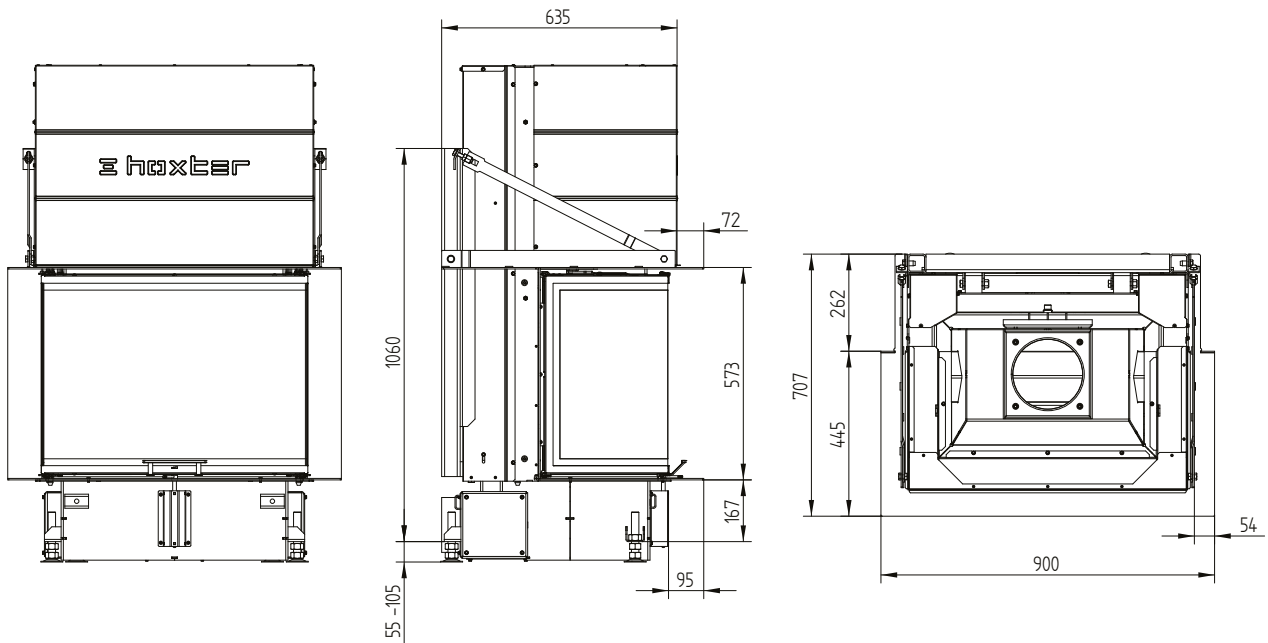
## UKA 37/75/37/57h supporting construction incl. build-on frame 5sides 70 mm



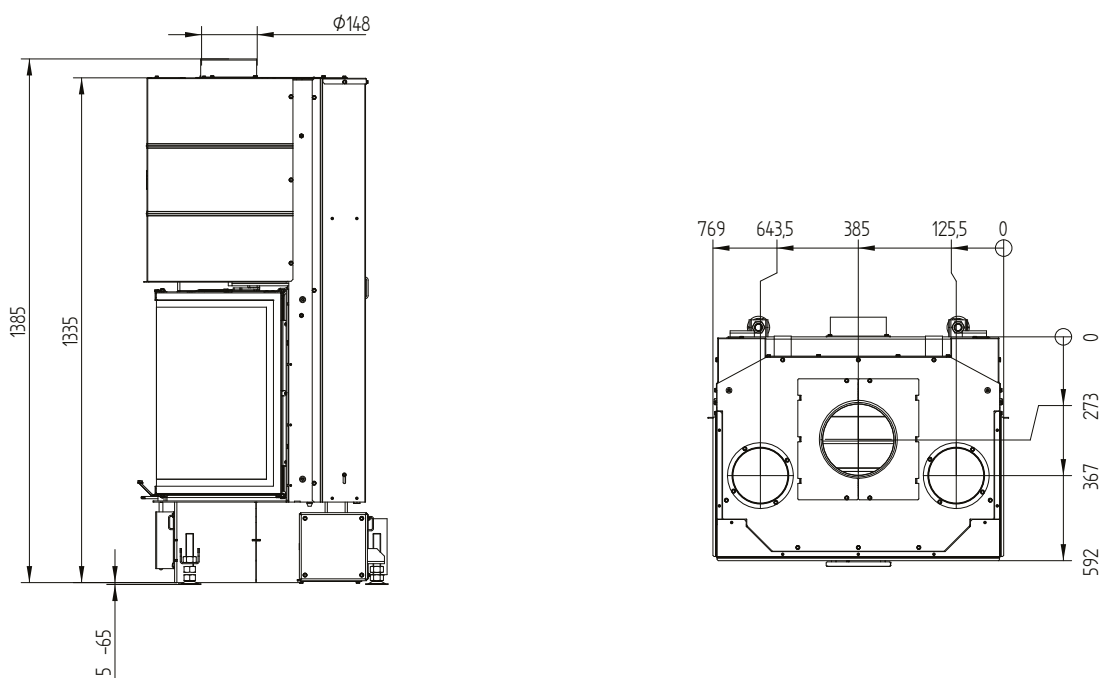
# UKA 37/75/37/57h

Technical data  
Version 09/2023

UKA 37/75/37/57h supporting construction incl. build-on frame 8sides 70 mm



Convection jacket UKA 37/75/37/57h



M 1:20